



**ELEVATION II**  
OPTIONAL PORCH RAILING



**ELEVATION III**  
OPTIONAL 3-CAR GARAGE, OPTIONAL PORCH RAILING  
AND OPTIONAL BEDROOM 2 BATH WINDOW



**ELEVATION IV**  
OPTIONAL STONE, OPTIONAL PORCH RAILING, OPTIONAL  
BEDROOM 2 BATH WINDOW, & OPTIONAL 3-CAR GARAGE

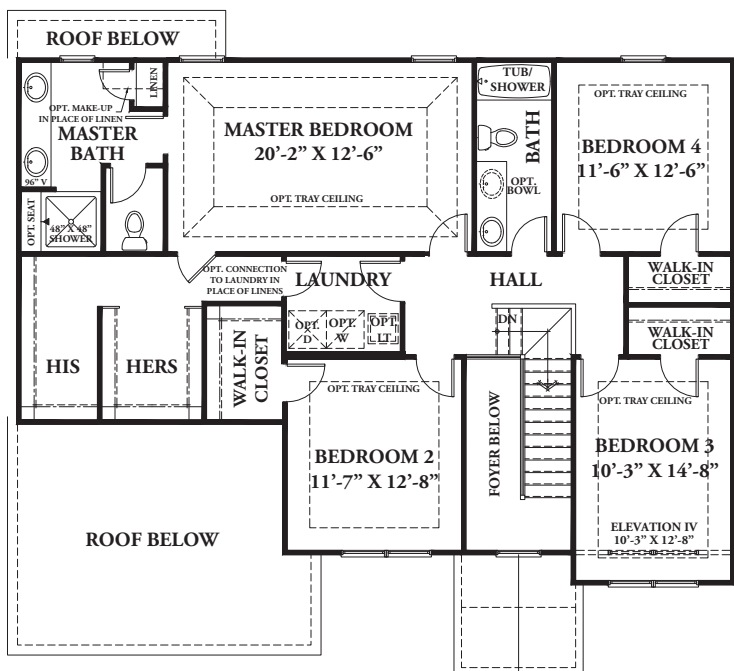


**ELEVATION V**

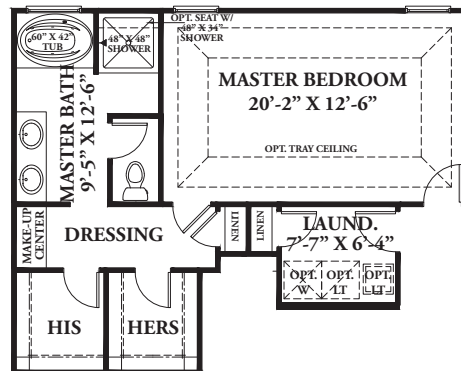
# SHODEEN

HOMES

## PALMETTO 2,674 SQ. FT.



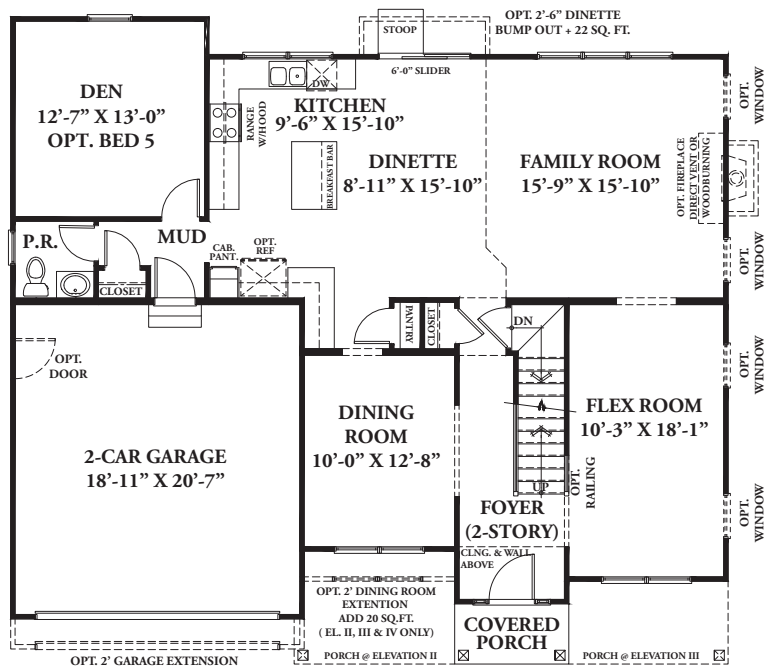
**SECOND FLOOR**  
1,335 SQ. FT.



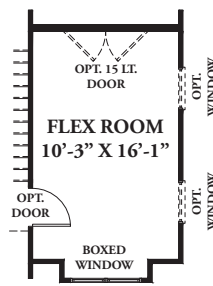
**MASTER BATH OPTION**



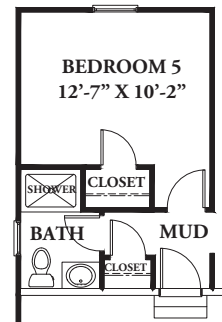
**BEDROOM 2 - BATH OPTION**  
ADD 48 SQ. FT.



**FIRST FLOOR**  
1,339 SQ. FT.



**PARTIAL PLAN  
ELEVATION II**  
ADD 9 SQ. FT.



**PARTIAL PLAN  
OPT. 3/4 BATH**

[www.shodeenhomes.com](http://www.shodeenhomes.com)

*"Moving toward the future with values from the past"*

